

151. OK.

FANFARE

Handwritten musical score for Fanfare, consisting of two staves. Both staves are in the key of D major (one sharp) and 2/4 time. The first staff begins with a treble clef and a key signature of one sharp (F#). The notes are: D4 (quarter), E4 (quarter), F#4 (quarter), G4 (quarter), A4 (quarter), B4 (quarter), C5 (quarter), B4 (quarter), A4 (quarter), G4 (quarter), F#4 (quarter), E4 (quarter), D4 (quarter). The second staff begins with a treble clef and a key signature of one sharp (F#). The notes are: D4 (quarter), E4 (quarter), F#4 (quarter), G4 (quarter), A4 (quarter), B4 (quarter), C5 (quarter), B4 (quarter), A4 (quarter), G4 (quarter), F#4 (quarter), E4 (quarter), D4 (quarter). The score includes various dynamic markings such as *ff*, *sfz*, and *sfz/2*, and articulation marks like accents and slurs.

1ST CORNET ON WISCONSIN

This image shows a handwritten musical score for the 1st Cornet part of the piece "On Wisconsin". The score is written on five staves. The first staff begins with a treble clef, a key signature of one flat (B-flat), and a common time signature (C). The music is written in a single melodic line. There are four boxed letters, A, B, C, and D, marking specific sections of the piece. The notation includes various note values, rests, and dynamic markings. The score concludes with a double bar line and a repeat sign. Below the main staff, there are two additional empty staves.

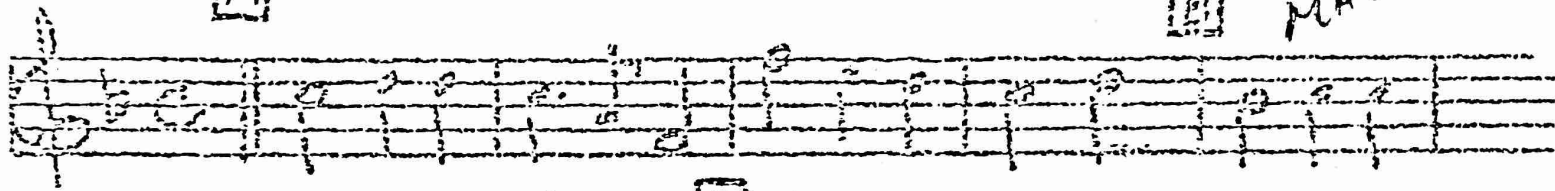
Cornet I

A THE STAR SPANGLED BANNER

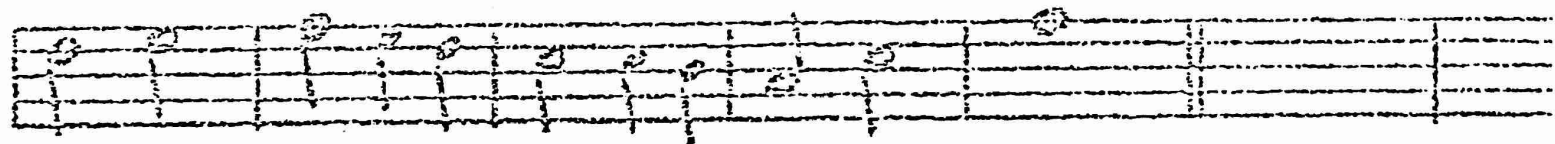
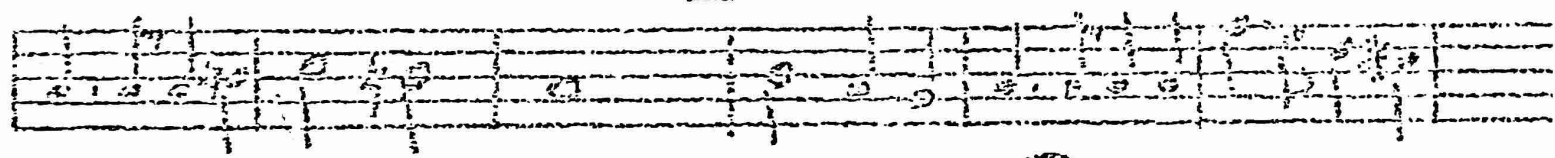
This image shows a handwritten musical score for the first cornet part of 'The Star Spangled Banner'. The score is written on five staves. The first staff begins with a treble clef and a key signature of one sharp (F#). The music is written in a style characteristic of early 20th-century band arrangements, with many notes and rests written in a somewhat shorthand or abbreviated manner. A large bracket spans across the first three staves, indicating a first ending. A boxed letter 'A' is placed at the beginning of the first staff, and another boxed letter 'B' is placed at the beginning of the fourth staff. The notation includes various note values, rests, and dynamic markings, though some are difficult to discern due to the handwriting and image quality.

Cornet I A ALMA MATER

B SAT
MAH



C



1ST. COR. "LHS FIGHT SONG" (O.D.)

1st. & 2nd. TRUMPET

LONG TRAIN RUNNING

REVISED
'02

8 (A) (B)

16 DR SOLO

(C)

(D)

Cheer

Arr. by William Searle

Trumpet I

The musical score for Trumpet I is written on a single staff with a treble clef and a key signature of one flat (B-flat). The piece is in 2/4 time. The score begins with a first ending bracket (I) and a first ending sign (II). The music features various dynamics including *f* (forte), *ff* (fortissimo), and *fff* (fortississimo). There are several accidentals, including flats and sharps, and a key signature change to two flats (B-flat and E-flat) in the latter half of the piece. A section labeled "DREAM BREAK" is indicated by a vertical line. The score concludes with a final *fff* dynamic marking.

Across The Field

Wm. A. Douglas

Trumpet in B \flat

7

14

20

28

34

39

ff

Fine

ff

Cresc.

D.S. al Fine

Trumpet 1

Ain't Been Good

The Original Dance Chart

composed by John Higgins for
"The 110 Marching Men of Ohio"

The musical score for Trumpet 1 consists of six staves of music, numbered 6 through 36. The music is written in a single treble clef with a key signature of one flat (B-flat). The tempo and dynamics are marked *ff* (fortissimo). The score includes several dynamic markings: *ff* at the beginning of measure 6, *ff* at the beginning of measure 30, and *ff* at the beginning of measure 36. There are also accents (>) and slurs throughout the piece. The score is divided into three sections by brackets labeled A, B, and C. Section A covers measures 6-11, Section B covers measures 12-23, and Section C covers measures 24-36. The music features a mix of eighth and sixteenth notes, with some measures containing rests. The piece concludes with a final *ff* marking and a fermata over the final note.

TAPS

The musical score for 'TAPS' is written in 3/4 time. The first staff begins with a treble clef and a common time signature (C). It starts with a *mp* dynamic marking and includes a section marker 'A' in a box. The melody consists of eighth and quarter notes, ending with a fermata. The second staff begins with a treble clef and a common time signature (C). It starts with a *ff* dynamic marking and includes a section marker 'B' in a box. The melody features a series of eighth notes, followed by a *p* dynamic marking and a long note with a fermata, ending with a double bar line.

Copyright ©1985 by STUDIO 224, Hialeah, Florida
International Copyright Secured Made In U.S.A. All Rights Reserved